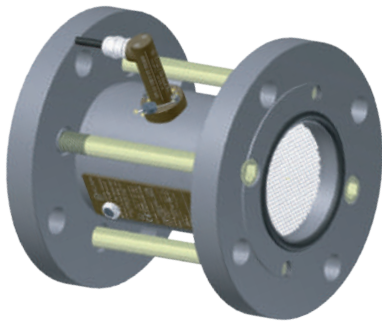


Turbine metrological measurement set, dedicated for AdBlue® deliveries.



ADBLUE® METERING DEVICES



## Product Certification



Equipment conforming to the Measuring Instruments Directive 2014/32/EU (MID).



ISO 9001: 2008



European Certifications Compliant with the measuring instruments directive and the directive covering equipment installed in potentially explosive areas.

## Application

Serves for metered distribution of AdBlue® products by full or empty hose.

- Pumped (CMA or Turbo Tronique) or gravity (GRAVICOMPT) deliveries
- Automated collector flap orders
- Distribution in preset, free or drum mode
- Edition of delivery notes and/or customized invoices

## Constitution

- |   |   |
|---|---|
| <ul style="list-style-type: none"> <li>▪ CMA Tronique / TURBO Tronique Pumped solution</li> </ul> | <ul style="list-style-type: none"> <li>- MICROCOMPT+ electronic computer</li> <li>- ADRIANE 3" stainless steel turbine or electromagnetic PROCESS DATA measuring device</li> <li>- Pressure Sensor (CMA) or gas separator (Turbo Tronique)</li> </ul> |
| <ul style="list-style-type: none"> <li>▪ GRAVICOMPT Gravity solution</li> </ul>                   | <ul style="list-style-type: none"> <li>- MICROCOMPT+ electronic computer</li> <li>- ADRIANE 3" stainless steel turbine</li> <li>- 2 gas sensors</li> </ul>  |
| <ul style="list-style-type: none"> <li>▪ AUTONOMOUS FLEXICOMPT+ Mobile solution</li> </ul>        | <ul style="list-style-type: none"> <li>- UNI electronic computer</li> <li>- ADRIANE 3" turbine (PVDF processing)</li> <li>- 2 built-in gas sensors</li> <li>- Built-in temperature sensor</li> </ul>  |

## Advantages

- |  |   |
|--|---|
| <ul style="list-style-type: none"> <li>▪ With or without gas separator</li> <li>▪ Automated deliveries</li> <li>▪ Quick deliveries with minimal pressure loss</li> </ul> | <ul style="list-style-type: none"> <li>▪ Compact and lightweight installation</li> <li>▪ Long service life</li> </ul> |
|--|---|



# ADBLUE METERING SOLUTIONS

## Main characteristics

Based on its experience in metrological measurement units for petroleum products, Alma has developed a full range dedicated to the transport and distribution of AdBlue®.

The TURBOTRONIQUE allows automated pumped distribution (20 bar max.) by one empty hose and one or two full hoses. As for the CMA, it does not require a gas separator.

The GRAVICOMPT allows gravity delivery which is also automated.

Distribution is free or with preset delivery volumes.

The autonomous FLEXICOMPT + is a mobile metering unit for connection to the delivery valve of the tank. It allows the control of any gravity delivery from a tanker vehicle.

ALMA turbine measuring devices and computers provide precision, reliability and simplicity to all your AdBlue® metering solutions.

| CMA Tronique / TURBO Tronique   | ADRIANE Turbine   | Computer   |
|---|---|--|
| <b>Options:</b><br>Electromagnetic flowmeter 4-40m <sup>3</sup> /h (65-650 L/min) or 5-80m <sup>3</sup> /h (83-1300 L/min)<br>Printer: EPSON TM-U295<br>Two delivery channels (full/empty)<br>Connection with embedded computing<br>3 or 4 button radio remote control<br>Temperature sensor<br><b>Certificate: LNE-14983 (MID)</b> | <b>Body:</b> Stainless steel with pulse emitter<br><b>Size:</b> 3" DN80-80<br><b>Flows:</b> 8-80 m <sup>3</sup> /h (130-1300 L/min)<br><b>Accuracy:</b> 0.3%<br><b>Repeatability:</b> 0.02%<br><b>Maximum pressure:</b> 30 bars<br><b>Temperature:</b> -25°C to +55°C<br><b>Weight:</b> 11 kg<br><b>Certificate: LNE-12393 (WELMEC Guide 8.8)</b> | <b>LCD Screen:</b> - Main Line, 6 digits<br>- Data line<br>- Pictogram (litres, m <sup>3</sup> /h, °C)<br>- Multilingual interface<br><b>Body:</b> Aluminium<br><b>Power supply:</b> 24 VDC<br><b>Weight:</b> 12kg<br><b>Protection :</b> IP66<br><b>Memory:</b> 3 years<br><b>Printing:</b> Summary at the end of the day<br>Events log<br>Delivery note<br>OBC* connection<br><b>Certificate: LNE-13624 (WELMEC Guide 8.8)</b> |
| <b>GRAVICOMPT</b><br><b>Options:</b><br>Printer: EPSON TM-U295<br>Connection with embedded computing<br>Temperature sensor<br><b>Certificate: LNE-20517 (MID)</b>   | <b>PD340 electromagnetic flowmeter</b><br><b>Flows:</b> 4-40 m <sup>3</sup> /h - 5-80m <sup>3</sup> /h<br>67-670 L/min - 83-1330 L/min<br><b>Weight:</b> 5kg<br><b>Certificate: TC7204 (Guide Welmec 8.8)</b>   |  |
| <b>AUTONOMOUS FLEXICOMPT+</b><br><b>Options:</b><br>Data transfer key CTD+<br>Printing valise<br><b>Certificate: LNE-25756 (MID)</b>  |   |  |

### CMA / Turbo Tronique (pumped solution)

- 1 MICROCOMPT
- 2 ADRIANE Turbine
- or
- 3 Electromagnetic flowmeter
- 4 Anti-return check valve
- 5 Pressure Sensor (CMA)
- or
- 6 Gas separator (Turbo Tronique)
- 7 Printer

### Gravicompt (gravity solution)

- 1 2 7

+

- 8 Gas sensor

### Flexicompt (mobile solution)

- 9 Flexicompt+

