







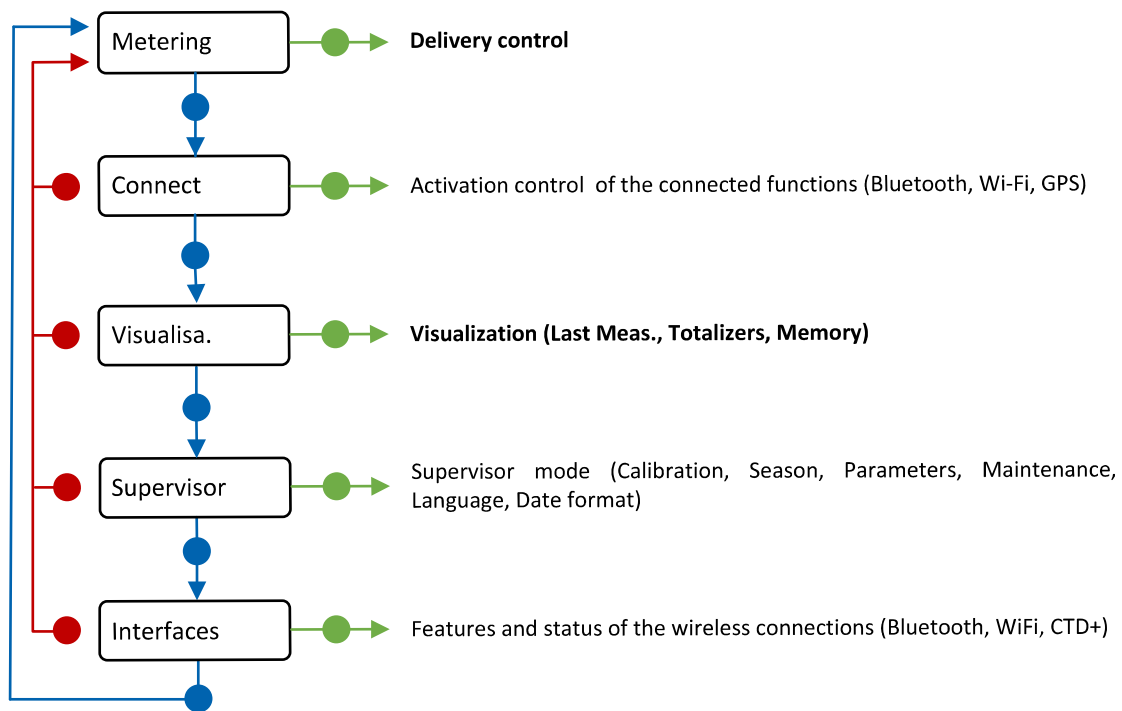


This document sketches out the main menus (please refer to operating manual MU 7095 EN for further information)

USING THE BUTTONS OF THE UNI-2

- | | | |
|---|---|--|
|  - Return to previous menu
- Increment the flashing figure
 |  - Choose the menu options
- Select the next digit
 |  - Validate the menu option
- Validate the data
- Validate the default
 |
|  - Light the display during 10 seconds
- Lighting is inhibited when Wi-Fi is enabled |  - Reset the volume to zero and record the data of the last measurement
- Reset the display when entering data | |



Recommendations for batteries charge:

- Outside potentially explosive area
- Use only the USB cable and the charging module ALMA Wireless charger, supplied with the equipment
- Only when necessary in order to optimize battery life and avoid premature degradation
- After more than 500 charge/discharge cycles the capacity of the batteries can be degraded, it is then necessary to replace them.

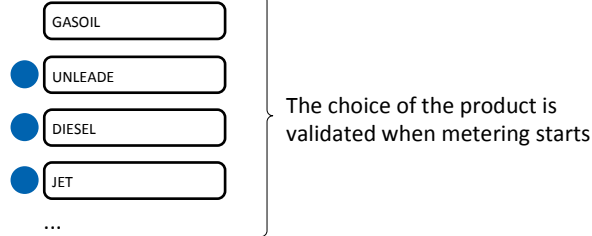
RUN A DELIVERY

1. PREPARE THE DELIVERY



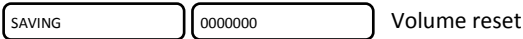
* last delivered product

▲ CHOOSE THE PRODUCT



▲ RESET THE METER

If data recording is automatic, appearance of flowrate resets the volume to zero.

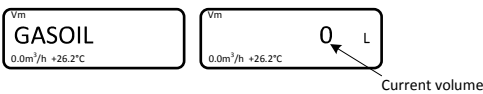


2. CARRY OUT THE DELIVERY

! MAKE SURE THE PRODUCT IS OK

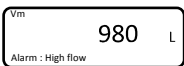
NOTE: The unit of flowrate and volume depends on the settings chosen.

▲ START THE DELIVERY



Interruption of the delivery

▶ APPEARANCE OF A FAULT AND DISPLAY OF AN ALARM



● Validate the fault (see list of alarms page 4)

▶ THE COMPARTMENT IS EMPTY



Wait the flashing display

✋ Close the valve → End the delivery (\$3)
→ Continue the delivery (\$2)

▶ INTENTIONAL INTERRUPTION OF THE DELIVERY

✋ The delivery may be interrupted at any time by closing the valve



✋ Close the valve → End the delivery (\$3)
→ Continue the delivery (\$2)

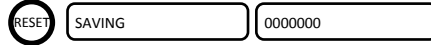
3. END THE DELIVERY

▲ RECORD DATA

If data recording is automatic, the last measurement is recorded after a time-out set in METROLOGICAL mode.

▲ RESET THE METER AND RECORD DATA

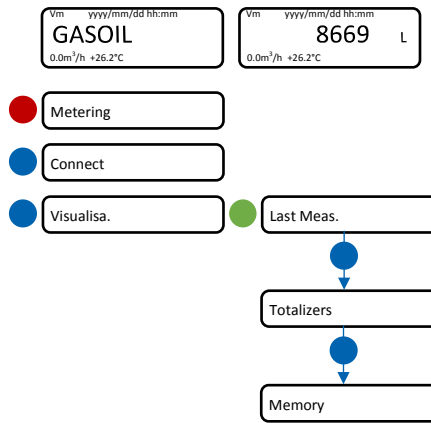
If data recording is not automatic, press RESET to record the last measurement and to reset the volume.



MEANING OF SYMBOLS

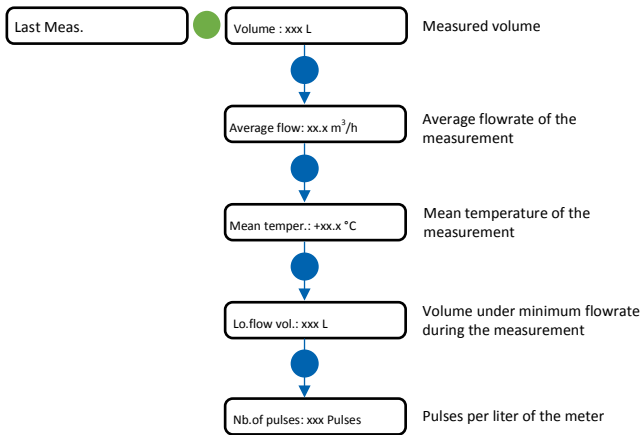
- ▲ Mandatory action
- ▲ Optional action
- ▶ Event during delivery
- ✋ Action by operator

DISPLAY THE DELIVERY DATA



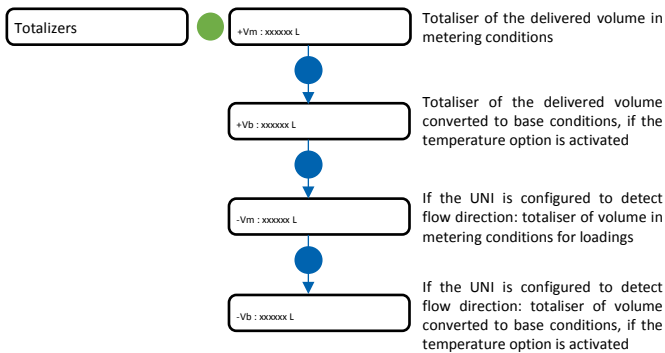
Last measurement

In case of a dispute, those indications provide proof



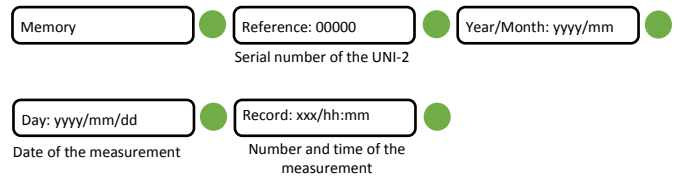
Totalizers

In case of a dispute, those indications provide proof

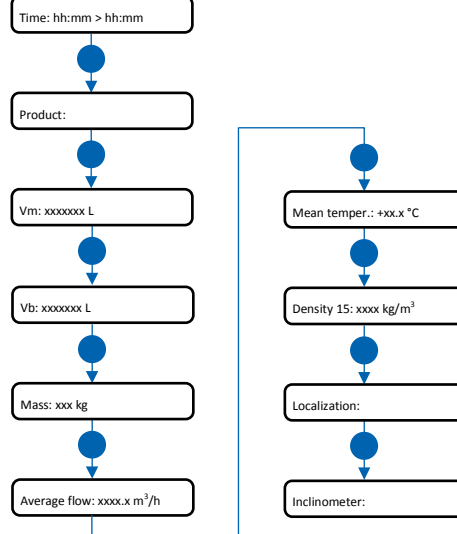


Memory

In case of a dispute, those indications provide proof



Information displayed depend on the configuration of the UNI-2.
The measured volume of gas is displayed for information only. It has no metrological value.



LIST OF ALARMS

	DISPLAY	MEANING	ACTION	
USER	COMMON	Overflow	Volume greater than 4 194 304 liters	Reset the device
		Low flowrate	Flow rate less than the setting minimal flow rate	Check the hydraulic configuration and the flowing
		No flowrate	No flowrate	Check the hydraulic configuration and the flowing
		Pressure low	Pressure below the minimum threshold	Check the setup / the transmitter status
		Sensor 1	High gas detector fault (GDh)	Use the maintenance menu to check the status of the detector
		Sensor 2	Low gas detector fault (GDI)	Use the maintenance menu to check the status of the detector
		Direction	Flow direction change during metering	Check the hydraulic configuration and the flowing
		Failure	Problem with the transfer of the files to the CTD+	See GU 7110
		Init Bluetooth	Bluetooth module initialization problem or low batteries	Charge the batteries or restart the UNI-2 via the menu Supervisor>Maintenance>Reboot
		Init GPS	GPS module initialization problem or low batteries	Charge the batteries or restart the UNI-2 via the menu Supervisor>Maintenance>Reboot
Init Wi-Fi	Wi-Fi module initialization problem or low batteries	Charge the batteries or restart the UNI-2 via the menu Supervisor>Maintenance>Reboot		
MPLS	Stop	Intentional interruption of delivery	Stop delivery	
	Authorization	The autorisation has been removed during pouring	The measurement is ended	
	Leak	Counting of a volume greater than or equal to 1 liter (metering off)	Acknowledge the alarm to end measurement	
	Preset	Volume \geq preset volume+1% the minimum quantity	Acknowledge the alarm	
REPARATOR	COMMON	Flowrates	Flow setting fault	Check the parameters
		Frequency	Frequency fault	Check the parameters
		Coefficients	Difference two coefficients is greater than 0.5%	Check the coefficients setup
		Metering	Problem of metering with the meter	Check the setup
		High flowrate	Flowrate greater than the setting maximum flowrate	Check the setup
		Low flow high	Flow greater than 20m ³ /h while GDh dry	Check the setup
		Date time	Loss of date and time	Set date and time in metrological mode or use the menu 'Connect>Sart GPS' to switch on the GPS. This operation must be done outdoors. It lasts one minute to synchronize the clock
		Gas	GDh is wet but GDI is dry	Check the hydraulic configuration / Check the detector status
		Dry metering	When using a pump. The volume of gas is greater than the minimum measured quantity	Stop metering
		Coil	Loss of pulse transmitter signal	Check the connection with the pulse transmitter
	MPLS	Temperature	Temperature less than -20°C or greater than 50°C	Check the temperature sensor (measure and calibration)
		Pressure	Incorrect measure of pressure	If steady alarm, substitution of the UNI-2
		Display	LCD display fault	If steady alarm, substitution of the UNI-2
		Watchdog	Fault with card	If steady alarm, substitution of the UNI-2
		Program	Error on the checksum of the metrological data	If steady alarm, substitution of the UNI-2
		RAM	Saved memory fault	If steady alarm, substitution of the UNI-2
		Memory	Bad writing into the memory	If steady alarm, substitution of the UNI-2
		Metrological	Loss of configuration	If steady alarm, substitution of the UNI-2
		Low Battery	The battery is no more charging	Substitution of the battery
		Totalizer	Totalizer fault	If steady alarm, substitution of the UNI-2
MPLS	Memory Default	Problem with the measurement integrity: loss of backup data concerning the last measurement	If steady alarm, substitution of the UNI-2	
	Micro SD card	Problem with the micro SD card	Check the micro SD card is in. Try another one if necessary	
	Reception	Problem of communication protocol between the UNI-2 and the MPLS	Check the compatibility	
	Communication	No more communication on the IRDA link to the MPLS	Check the IRDA link	